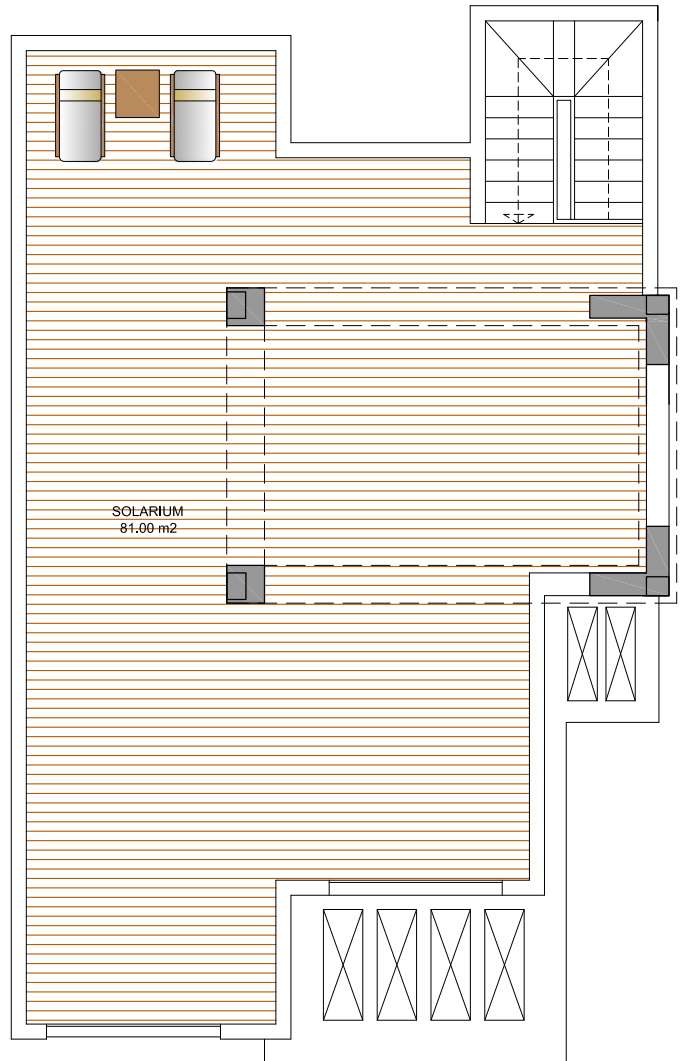
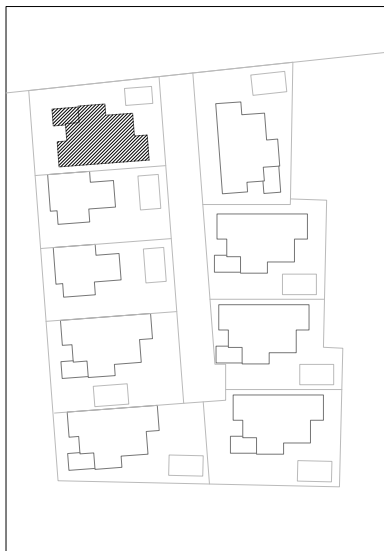


PLANTA BAJA



CUBIERTA

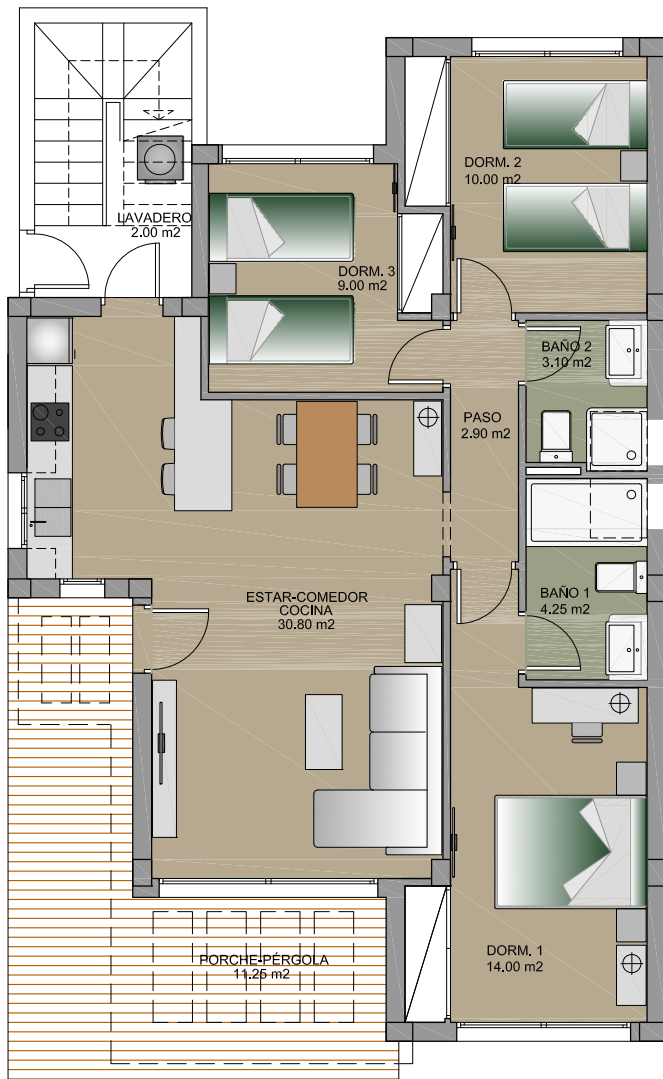


SUPERFICIE CONSTRUIDA	
VIVIENDA (BAJO)	87.44 m ²
LAVADERO (100%)	2.00 m ²
TOTAL	89.44 m²
PORCHE-PÉRGOLA	11.25 m ²
SOLARIUM	81.00 m ²
TOTAL	181.69 m²

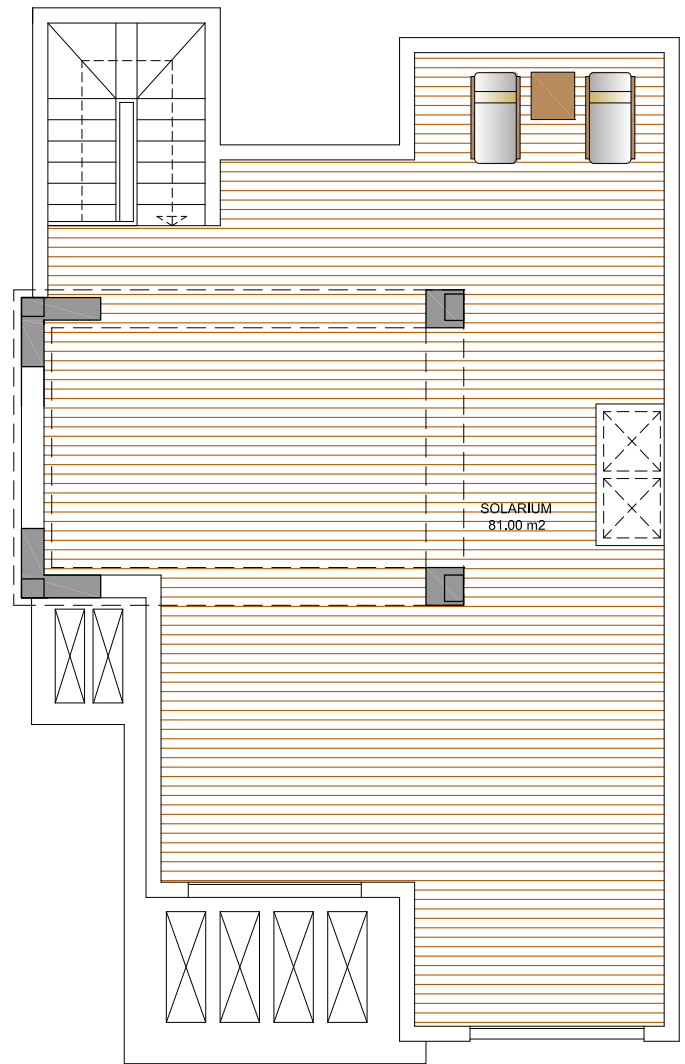
VIVIENDA 1



ESCALA GRÁFICA



PLANTA BAJA



CUBIERTA

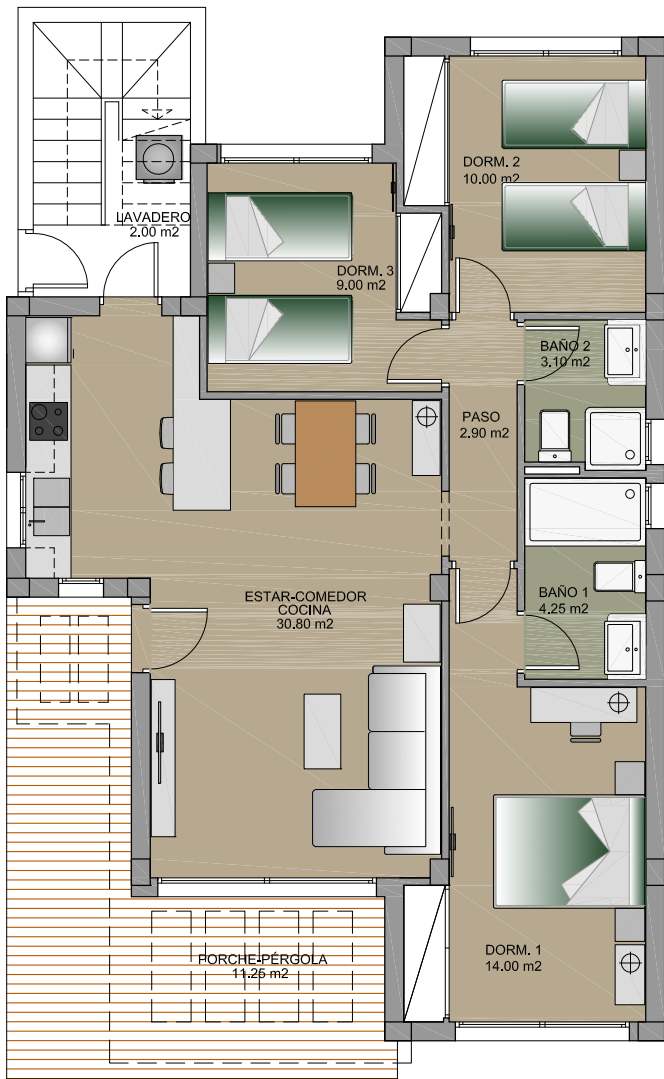


SUPERFICIE CONSTRUIDA	
VIVIENDA (BAJO)	87.44 m2
LAVADERO (100%)	2.00 m2
TOTAL	89.44 m2
PORCHE-PÉRGOLA	11.25 m2
SOLARIUM	81.00 m2
TOTAL	181.69 m2

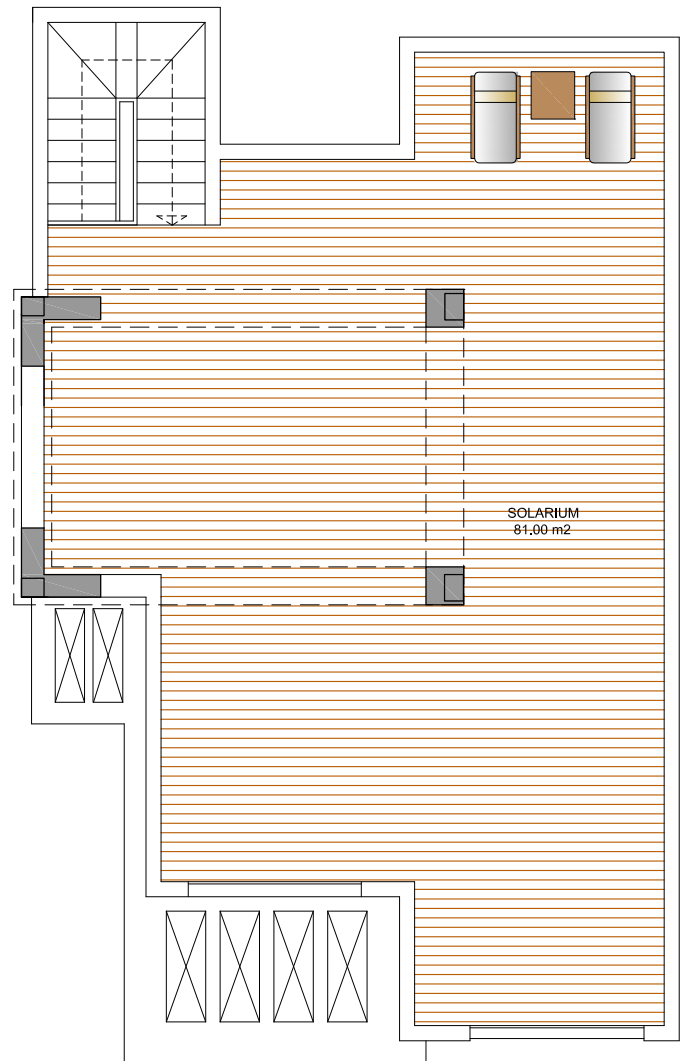
VIVIENDAS 4 y 5



ESCALA GRÁFICA



PLANTA BAJA



CUBIERTA



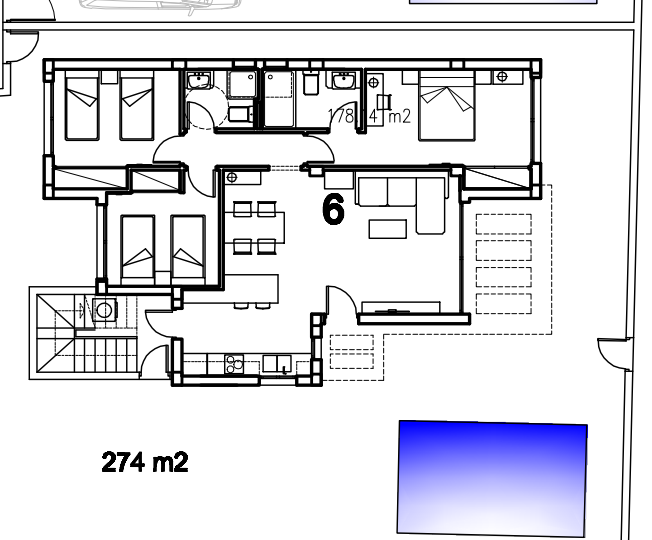
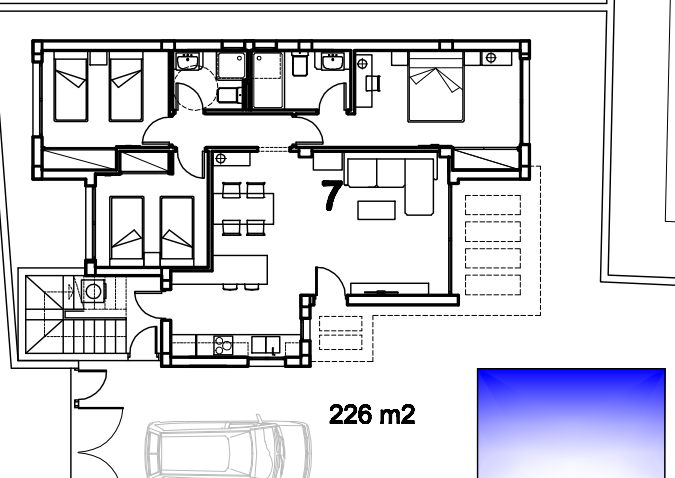
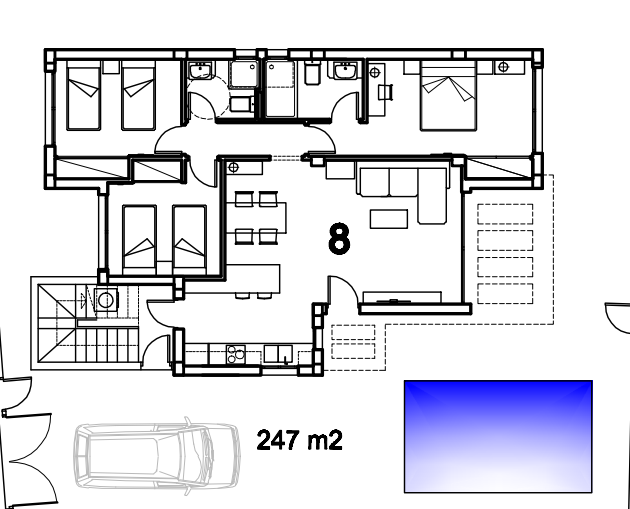
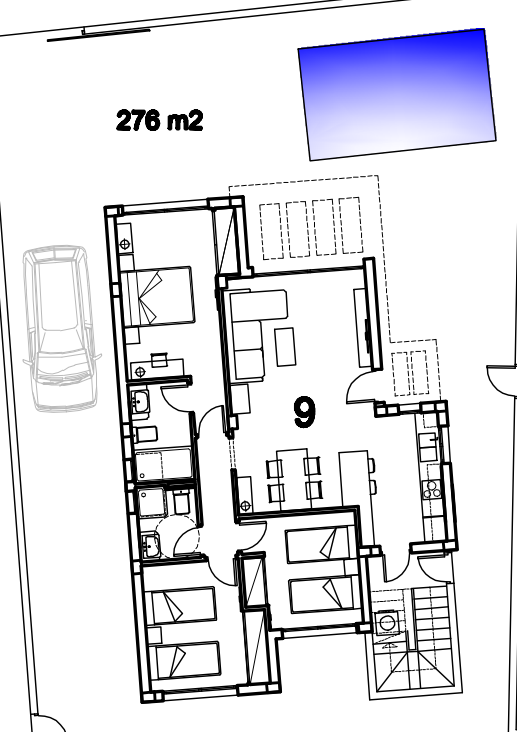
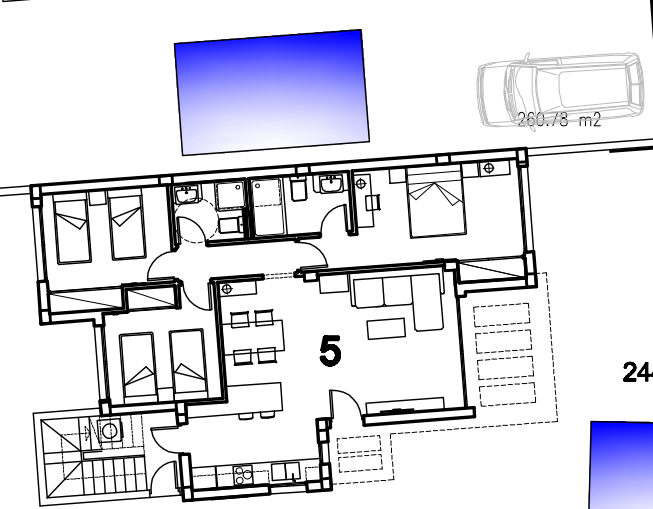
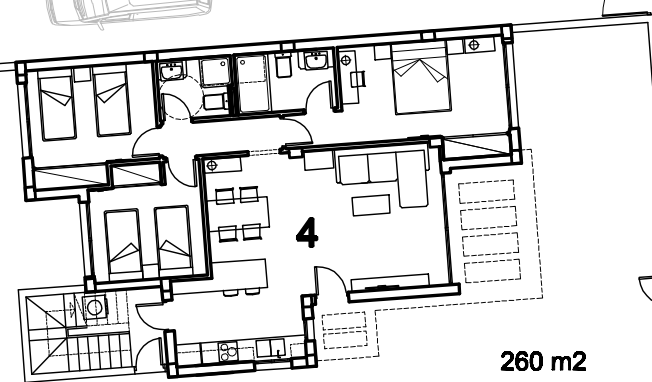
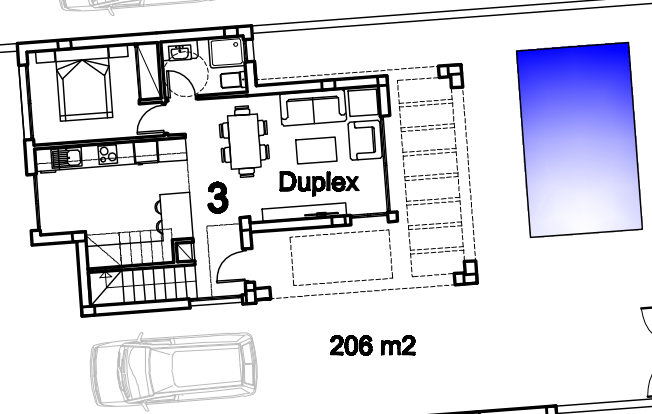
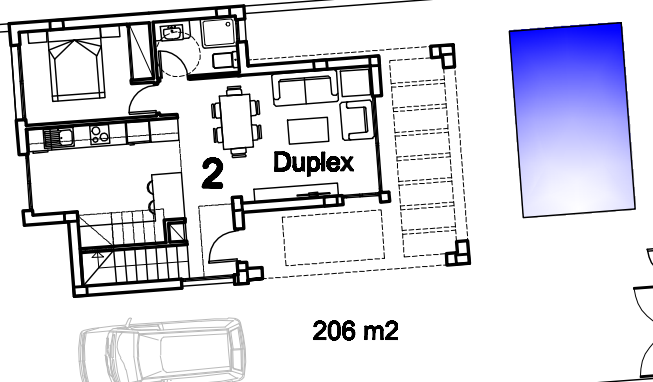
SUPERFICIE CONSTRUIDA	
VIVIENDA (BAJO)	87.44 m ²
LAVADERO (100%)	2.00 m ²
TOTAL	89.44 m²
PORCHE-PÉRGOLA	11.25 m ²
SOLARIUM	81.00 m ²
TOTAL	181.69 m²

VIVIENDAS 6, 7, 8 y 9



ESCALA GRÁFICA

CALLE MANUEL TARIN SALA



CALLE PEATONAL

CALLE PEATONAL

CALLE PEATONAL

ZONA VERDE

PARCELA : 2.438,92 m2

88,44 m2 x 7 uds. : 619,08 m2
99,50 m2 x 2 uds. : 199,00 m2
818,08 m2



ESCALA GRÁFICA

ESCALA 1:200

20-09-2017

